

1

2

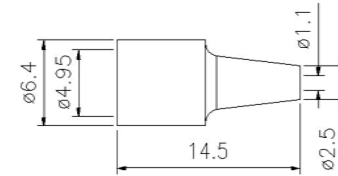
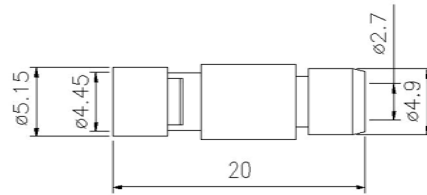
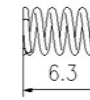
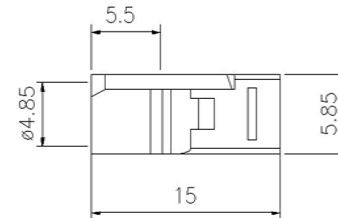
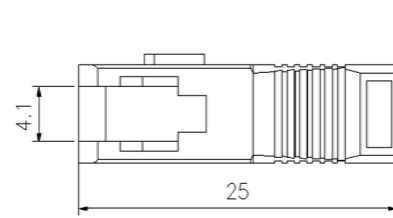
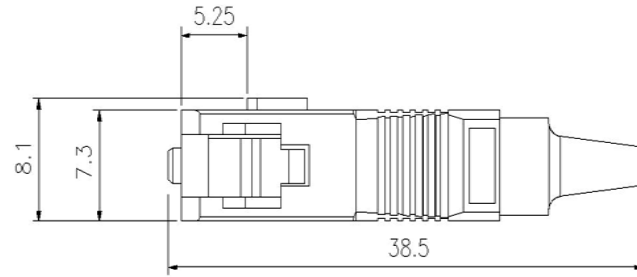
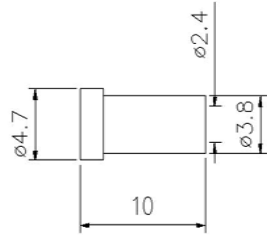
3

4

5

6



NUMBER	PART	MATERIAL
1	HOUSING	ABS/PC
2	DUST CAP	PE
3	BOOT	PC
4	FERRULE	ZrO2



**NOTES:**

- 1. SC SIMPLEX TYPE.
- 2. INSERTION LOSS:<0.2DB.
- 3. OPERATING TEMPERATURE: -20°C to +70°C.
- 4. STORAGE TEMPERATURE: -40°C to +80°C
- 5. PACKAGING QUANTITY 100PIECE
- 6. THIS PRODUCT COMPLIES WITH ROHS.
- 7. COLOR: BEIGE, BLUE, GREEN, AQUA, E-V

Material		
ITEMS	SPECIFICATIONS	QTY
1		
2		
3		

x. ± 5	x° ± 5°	ECN.NO.	UNITS			
.x ± 0.05	.x° ± 0.1°		mm			
.xx ± 0.01	.xx° ± 0.05°	DRAWER	MAT'L	TITLE:		
.xxx ± 0.001	.xxx° ± 0.01°	L	N/A		SC 0.9MM SIMPLEX CONNECTOR	
THIS DOCUMENT IS THE PROPRIETARY PROPERTY OF INTERNATIONAL.SUCH INFORMATION SHALL NOT BE REPRODUCED NOR DISCLOSED			APPD.	FINISH		
					N/A	
			RFV	DATE	DWG NO.:	
A	2018-4-12	GSCON01011	SCALE	SHEET	REV.	
				N/A	1/1	A

1

2

3

4

5

6