

1

2

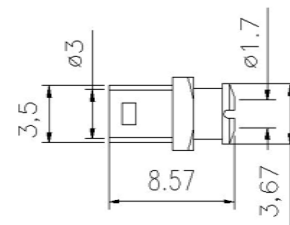
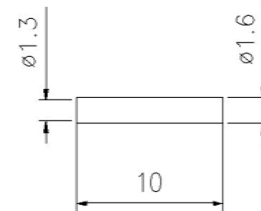
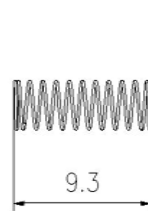
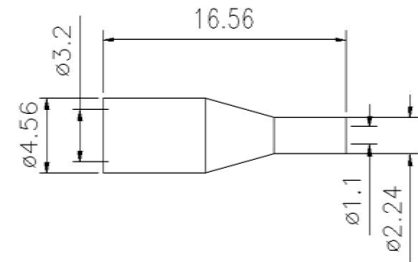
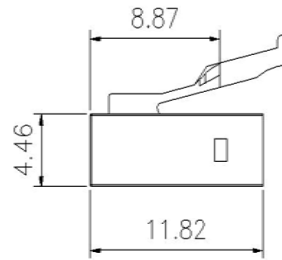
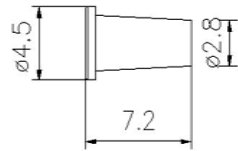
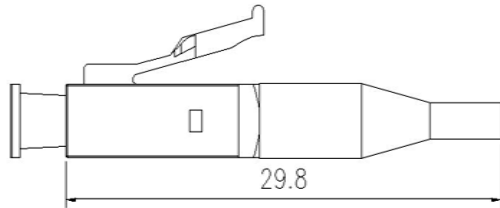
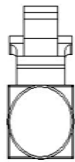
3

4

5

6



NUMBER	PART	MATERIAL
1	HOUSING	ABS/PC
2	DUST CAP	PE
3	BOOT	TPR
4	FERRULE	ZrO2



NOTES:

- 1. LC SIMPLEX TYPE.
- 2. INSERTION LOSS:<0.2DB.
- 3. OPERATING TEMPERATURE: -20°C to +70°C.
- 4. STORAGE TEMPERATURE: -40°C to +80°C
- 5. PACKAGING QUANTITY 100PIECE
- 6. THIS PRODUCT COMPLIES WITH ROHS.
- 7. COLOR:Blue,Green,Gray,Aqua,E-V

Material		
ITEMS	SPECIFICATIONS	QTY
1		
2		
3		

x. ± 5	x° ± 5°	ECN.NO.	UNITS	
.x ± 0.05	.x° ± 0.1°		mm	
.xx ± 0.01	.xx° ± 0.05°	DRAWER	MAT'L	TITLE:
.xxx ± 0.001	.xxx° ± 0.01°	L	N/A	LC 0.9MM SIMPLEX CONNECTOR
THIS DOCUMENT IS THE PROPRIETARY PROPERTY OF INTERNATIONAL.SUCH INFORMATION SHALL NOT BE REPRODUCED NOR DISCLOSED			APPD.	DWG NO.:
				GSCON01029
			FINISH	
			N/A	
			DATE	SCALE
			2018-4-12	N/A
			RFV	SHEET
			A	1/1
				REV.
				A

1

2

3

4

5

6