

1

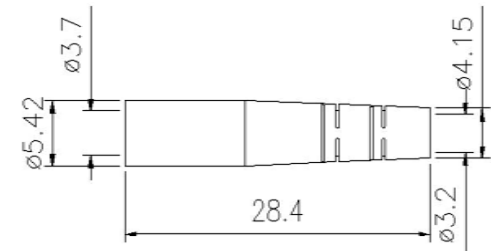
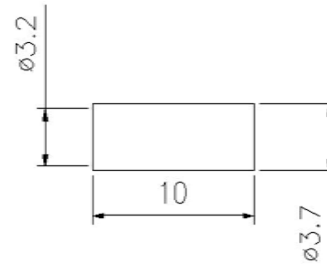
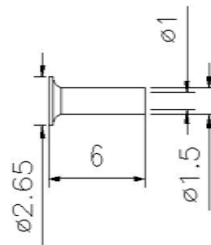
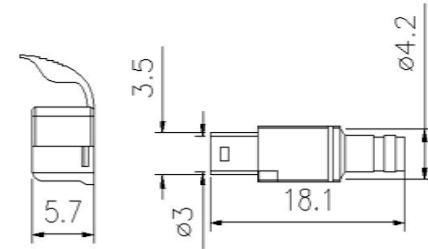
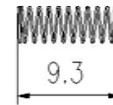
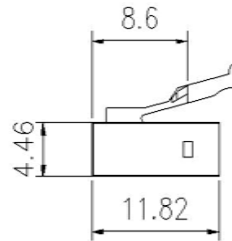
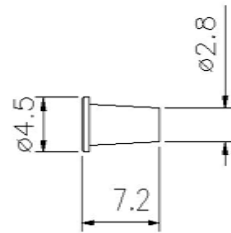
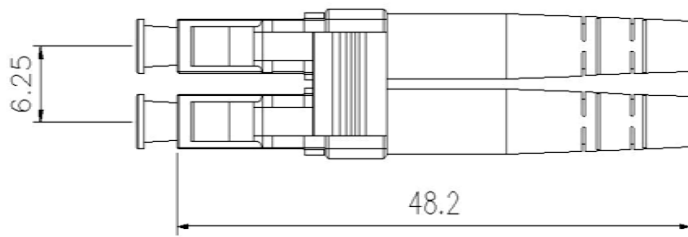
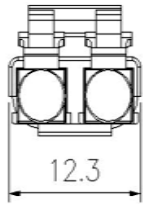
2

3

4

5

6



NUMBER	PART	MATERIAL
1	HOUSING	ABS/PC
2	DUST CAP	PE
3	BOOT	TPR
4	FERRULE	ZrO2

## NOTES:

- LC DUPLEX TYPE.
- INSERTION LOSS:<0.2DB.
- OPERATING TEMPERATURE: -20°C to +70°C.
- STORAGE TEMPERATURE: -40°C to +80°C
- PACKAGING QUANTITY 100PIECE
- THIS PRODUCT COMPLIES WITH ROHS.
- COLOR:BLUE, GREEN, GRAY, AQUA, E-V

Material		
ITEMS	SPECIFICATIONS	QTY
1		
2		
3		

x. ± 5	x° ± 5°	ECN.NO.	UNITS
.x ± 0.05	.x° ± 0.1°		mm
.xx ± 0.01	.xx° ± 0.05°	DRAWER	MAT'L
.xxx ± 0.001	.xxx° ± 0.01°	L	N/A
THIS DOCUMENT IS THE PROPRIETARY PROPERTY OF INTERNATIONAL.SUCH INFORMATION SHALL NOT BE REPRODUCED NOR DISCLOSED		APPD.	FINISH
		RFV	N/A
		A	DATE
			2018-4-12

TITLE:		
<b>LC 3MM DUPLEX CONNECTOR</b>		
DWG NO.: <b>GSCON01003</b>		
	SCALE	SHEET
	N/A	1/1
	REV.	A

1

2

3

4

5

6