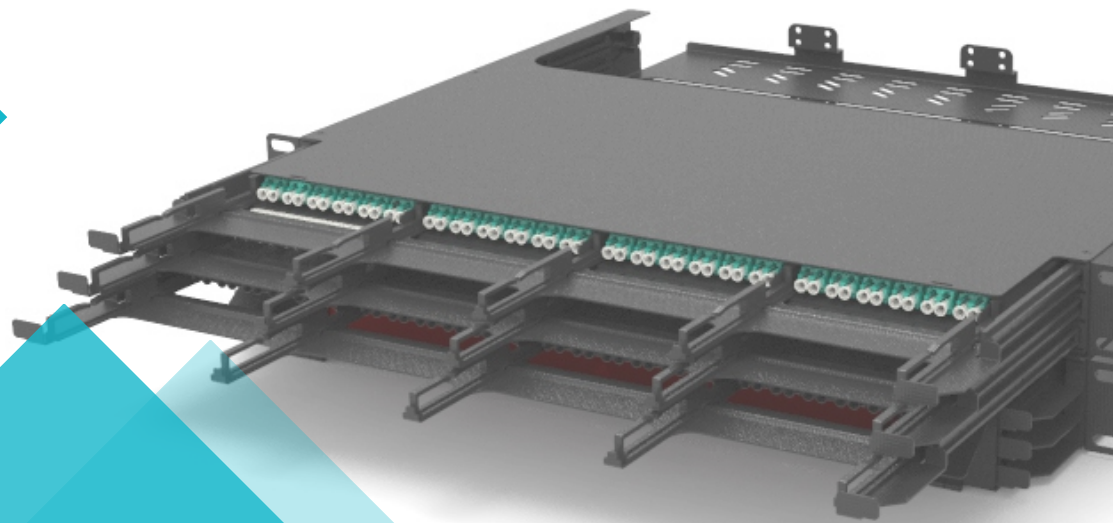


Data Center HD Series

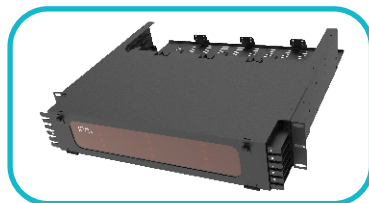
HIGH-DENSITY FIBER ENCLOSURE



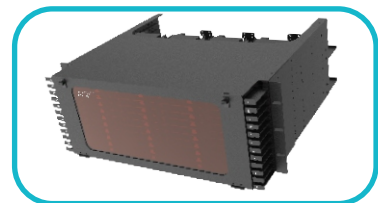
Data center HD System offers an ideal migration path to 10G/40G/100Gb/s and beyond.



1U-RACK



2U-RACK



4U-RACK

MTP & MPO Solution

HIGH-DENSITY FIBER ENCLOSURE



Data center HD series high density MTP/MPO fiber optic enclosures.

Designed for MTP/MPO data center high-density cabling systems.

The 1U chassis can be designed for up to 12 slots.

The assembly and testing of the fiber optic module box is done at the factory, and the user can directly link to the field device in the data center.

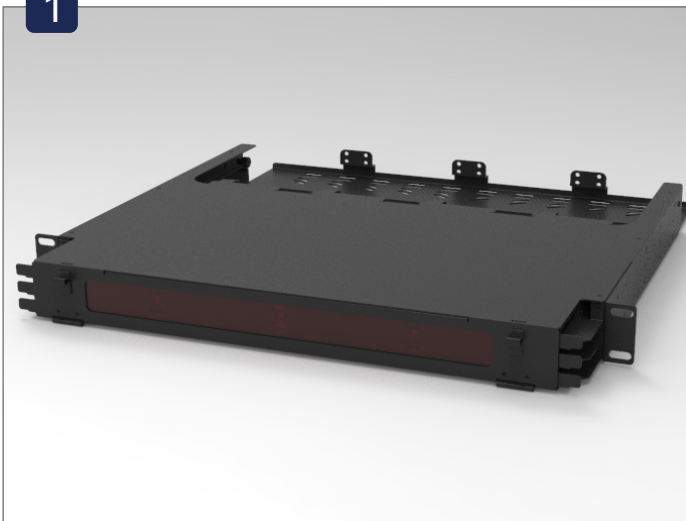
High-density chassis meets the needs of users for high-capacity cabling data centers.

Simple installation, fast construction, compact design, high precision, plug and play.

ENCLOSURE

FEATURES & BENEFITS

1



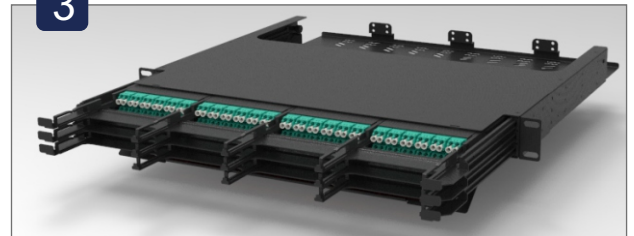
HIGH-QUALITY MATERIALS:

- ♦ Aluminum body, lighter weight.
- ♦ Surface Powder Coat, wear and corrosion resistance, strong and beautiful.
- ♦ Factory pre-populated panel saves installation time.
- ♦ 1U Rack 144Fiber(LC), 2U Rack 288Fiber(LC), 4U Rack 576Fiber(LC).

2



3



RACK PULL-OUT DESIGN:

- ♦ Layered drawer design.
- ♦ Each layer of trays can be pulled independently.

4



INSTALL AND UNINSTALL:

- ♦ Cassettes can be removed or installed directly from the front or back of the Enclosure.

EASY INSTALLATION:

- ♦ Open rear entry ports guarantee easy cabling access

MTP & MPO Solution

HIGH-DENSITY FIBER ENCLOSURE



STANDARDS:

- ◆ COMPLY WITH STANDARD TIA942-A, TIA 568C.3, ISO11801, ISO26764, EN50173-5, IEC 60793, GR-1435-CORE.
- ◆ Environment temperature: -25°C~+60°C
- ◆ Relative humidity: ≤85%(30°C)
- ◆ Atmospheric pressure: 70~106Kpa.
- ◆ Insulation resistance: > 2x 104MΩ / 500VDC.

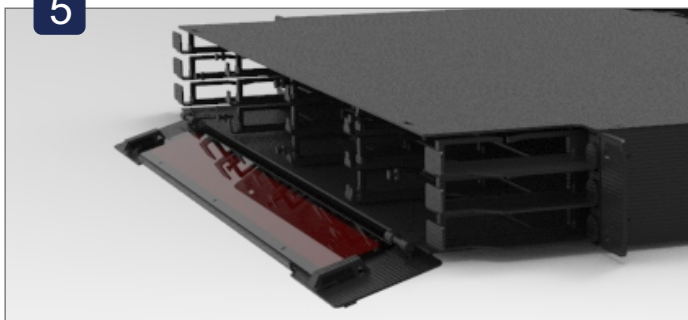
APPLICATION:

- ◆ Data communication applications.
- ◆ Data Center infrastructure.
- ◆ Storage Area Network - Fiber Channel.
- ◆ 10G/40G/100 Gbps Protocols compatible.

ENCLOSURE

FEATURES & BENEFITS

5



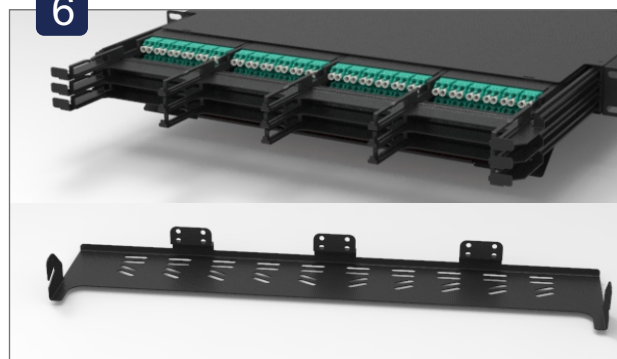
CABLE MANAGEMENT:

- ◆ Cable management racks are available on the front and back for easy finishing of fiber optic cables.

VISUALIZATION/DUSTPROOF:

- ◆ The front of the enclosure has a door design for dust protection.
- ◆ Push to open and close latching door.

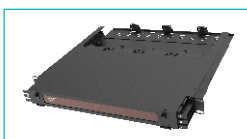
6



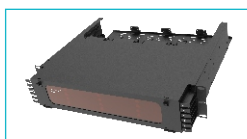
ORDERING INFORMATION

ENCLOSURE FOR BASE-12 APPLICATIONS:

PART NUMBER	DESCRIPTION
HDM-1U12P	1RU, HD Fiber Enclosure (Unloaded), Holds Up to 12 x BASE-12 Cassettes or Panels
HDM-2U24P	2RU, HD Fiber Enclosure (Unloaded), Holds Up to 24 x BASE-12 Cassettes or Panels
HDM-4U48P	4RU, HD Fiber Enclosure (Unloaded), Holds Up to 48 x BASE-12 Cassettes or Panels



HDM-1U12P
1U Rack-Mount with 12 Slots



HDM-2U24P
2U Rack-Mount with 24 Slots



HDM-4U48P
4U Rack-Mount with 48 Slots

SPECIFICATIONS

- Dimensions(mm):
1RU (483 x 460.7 x 44.3)
2RU (483 x 460.7 x 88)
4RU (483 x 460.7 x 176)
- Material: Aluminum+SPCC
- 16 gauge, Powder Coating
- Environment temperature: -25°C ~ +60°C
- The relative humidity: ≤85%(30°C)

MTP & MPO Solution

FIBER OPTIC CASSETTE MODULE

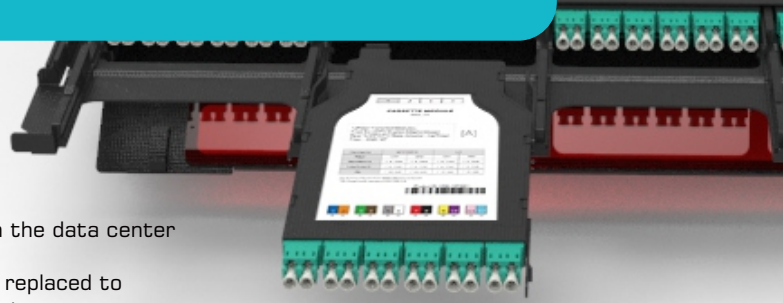


Data center HD series MTP/MPO Fiber optic cassette module.

The advantage of using Data center HD Series cassette modules in the data center is that the modular infrastructure is more manageable and flexible.

As future connectivity requirements change, modules can be easily replaced to meet those needs while retaining the existing trunk cable infrastructure.

The MTP/MPO adapter panel or MPO-MPO conversion module facilitates upgrade from a 10G network to a 40G/100G network. The cassette module is tailored to optimize cable management, speed deployment, increase space utilization, and increase flexibility and management capabilities to reduce installation costs.



MODULES

FEATURES & BENEFITS

1



MPO-LC CASSETTE MODULES:

- ♦ Ultra-thin, 12- fiber MTP/MPO configurations.
- ♦ A variety of fiber types are available including single-mode, multimode, and laser-optimized multimode.
- ♦ Easy, one-hand installation and removal.
- ♦ Factory pre-populated panel saves installation time.
- ♦ 100% Tested - Combination of high quality components and manufacturing.
- ♦ Cassettes can be removed or installed directly from the front or back of the Enclosure.

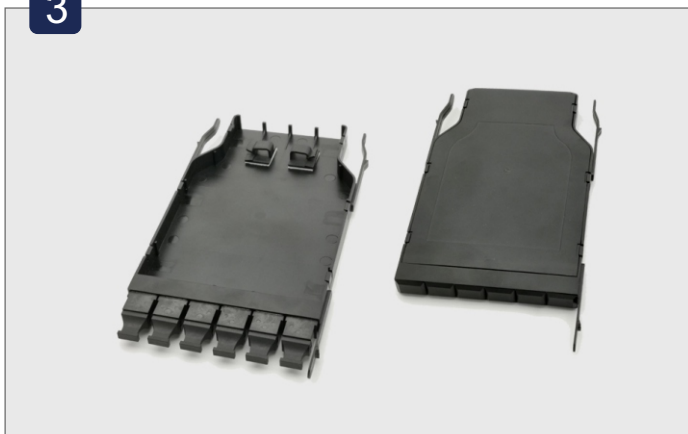
2



MPO-MPO CONVERSION CASSETTES:

- ♦ Manage polarity to maintain, transmit, and receive connections between parallel optics and SFP connectivity. Connect to electronics with LC ports and aggregates SFP ports to a QSFP28 or PSM4 (100G), QSFP+ (40G), or CXP (120G) port.
- ♦ Configure up to 24 fibers for 3 channels (40 Gb/s) per cassette.
- ♦ Snap in and out of enclosure/panel for rapid installation, adds, and changes.

3



FIBER ADAPTER PANELS:

- ♦ ABS material, Light and beautiful plastic structure.
- ♦ Suitable for many kinds of adapters: MPO, SC, LC.
- ♦ Connect to field-terminated backbone cabling or pre-terminated trunks.
- ♦ Easy, one-hand installation and removal.
- ♦ Blank fiber adapter panel reserves space for future use.

MTP & MPO Solution

FIBER OPTIC CASSETTE MODULE

APPLICATION:

- ◆ Data communication applications.
- ◆ Data Center infrastructure.
- ◆ Storage Area Network - Fiber Channel.
- ◆ 10G/40G/100 Gbps Protocols compatible.

STANDARDS:

- ◆ COMPLY WITH STANDARD TIA942-A, TIA 568C.3, ISO11801, ISO26764, EN50173-5, IEC 60793, GR-1435-CORE.
- ◆ Environment temperature: -25°C~+60°C
- ◆ The relative humidity: ≤85%(30°C)

MODULES

OPTICAL PERFORMANCE

ITEMS	Elite Multi-mode	Standard Multi-mode	Elite Single-mode	Standard Single-mode
MTP/MPO_IL(dB)	<0.1dB Typical, <0.35dB Maximum	<0.2dB Typical, <0.60dB Maximum	<0.1dB Typical, <0.35dB Maximum	<0.25dB Typical, <0.75dB Maximum
MTP/MPO_RL(dB)	> 20dB	> 20dB	> 60dB	> 60dB
LC_IL(dB)	< 0.15dB	< 0.25dB	< 0.15dB	< 0.25dB
LC_RL(dB)	> 35dB	> 35dB	UPC >55dB APC >65dB	UPC >50dB APC >60dB

MODULES

TECHNICAL SPECIFICATIONS

Cassette module materials	ABS Resin, Black
Dimensions	96mm*197mm*11.9mm
Flammability rate	UL94-V0
RoHS	Compliant
Environment temperature	-25°C~+60°C

ORDERING INFORMATION

MPO-LC CASSETTE MODULES:

PART NUMBER	DESCRIPTION
HDM-TMUDE112ASMB1	MPO-LC Cassette, 12C Up/Down MPO/APC Male to 6x LC/UPC Duplex Blue Adapter , SMF-28, Type B1
HDM-TMUDE112AM3B1	MPO-LC Cassette, 12C Up/Down MPO/PC Male to 6x LC/PC Duplex Aqua Adapter , OM3, Type B1
HDM-TMUDE112AM4B1	MPO-LC Cassette, 12C Up/Down MPO/PC Male to 6x LC/PC Duplex Aqua Adapter , OM4, Type B1

MPO-MPO CONVERSION CASSETTES:

PART NUMBER	DESCRIPTION
HDM-CM124308SM	Conversion Cassette, SM, Rear (x1)24F MPO/APC Male, Front (x3)8F MPO/APC Male, Up/Down, Black adapter
HDM-CM124308M3	Conversion Cassette, OM3, Rear (x1)24F MPO/PC Male, Front (x3)8F MPO/PC Male, Up/Down, Black adapter
HDM-CM224608M3	Conversion Cassette, OM3, Rear (x2)24F MPO/PC Male, Front (x6)8F MPO/PC Male, Up/Down, Black adapter
HDM-CM124308M4	Conversion Cassette, OM4, Rear (x1)24F MPO/PC Male, Front (x3)8F MPO/PC Male, Up/Down, Black adapter
HDM-CM224608M3	Conversion Cassette, OM4, Rear (x2)24F MPO/PC Male, Front (x6)8F MPO/PC Male, Up/Down, Black adapter

FIBER ADAPTER PANELS:

PART NUMBER	DESCRIPTION
HDM-AP06MPOUDBK	Adapter Panel, SM/MM, Front (x6) MPO Up/Down(A/C) Black adapter
HDM-AP06LCDSMBL	Adapter Panel, SM, Front (x6) LC Duplex Blue adapter
HDM-AP06LCDXMMAQ	Adapter Panel, MM, Front (x6) LC Duplex Aqua adapter
HDM-AP06LCDXMMEV	Adapter Panel, MM, Front (x6) LC Duplex Violet adapter
HDM-APXXBK	Blank fiber adapter panel, Black

Connectivity Method B for duplex signals

